



# I-293 EXIT 6 & 7 (PART B)

Technical Advisory Committee (TAC)  
July 21, 2016



# I-293 EXITS 6 & 7 — PART B

(MANCHESTER #16099)

New Hampshire Department of  
Transportation (NHDOT)

## **Project Team**

Vanasse Hangen Brustlin, Inc. (VHB)

Southern New Hampshire Planning Commission (SNHPC)

RKG Associates

Independent Archaeological Consulting, LLC (IAC)

ARCADIS

# TODAY'S AGENDA

- Project Purpose
- Modified Front Street Alignment
- Proposed Action
- Bicycle and Pedestrian Connectivity
- Project Schedule

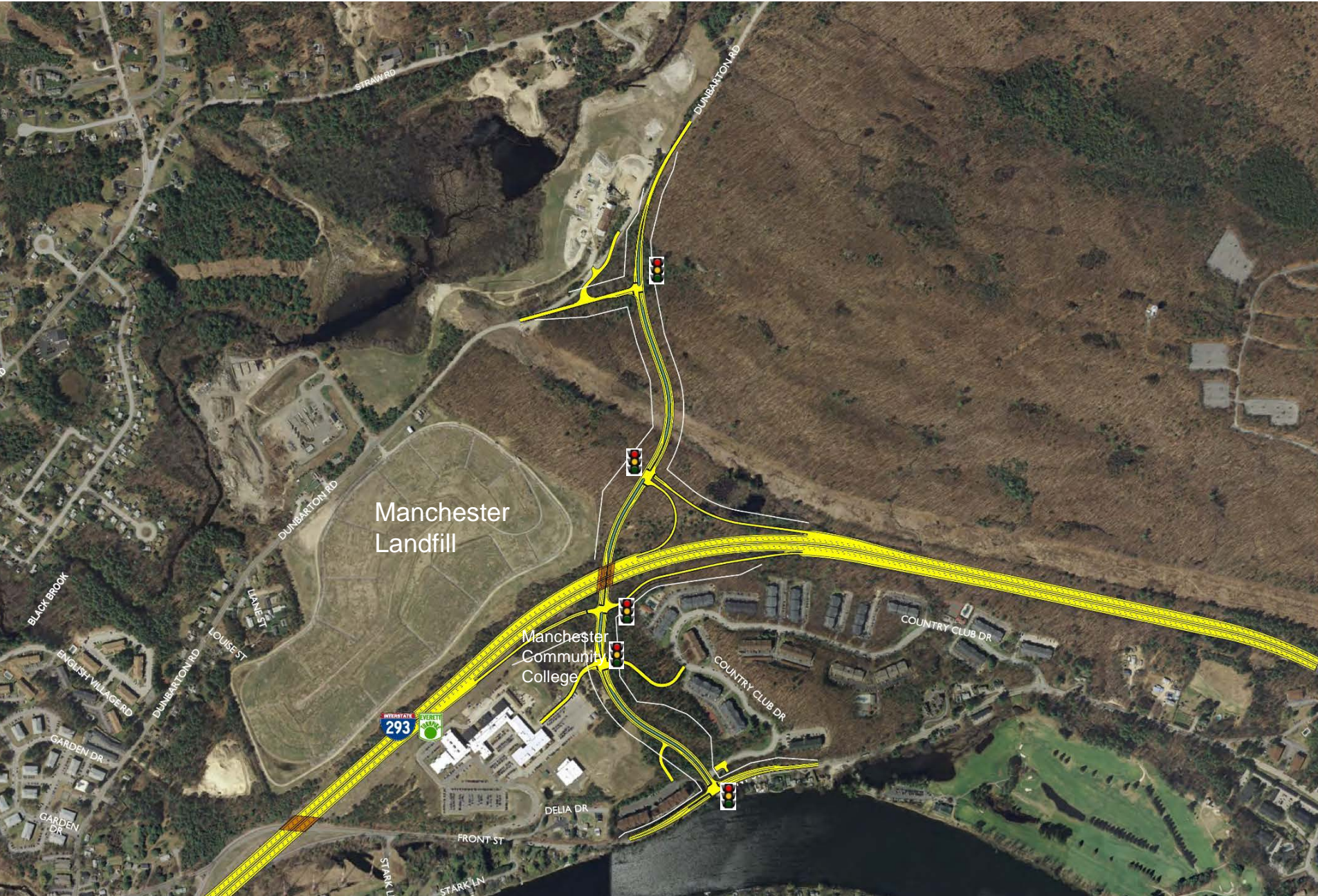
# PURPOSE

The purpose of the project is to address capacity, safety, and access related deficiencies along a 3.5-mile portion of I-293 beginning north of Exit 5 and ending north of Exit 7 by:

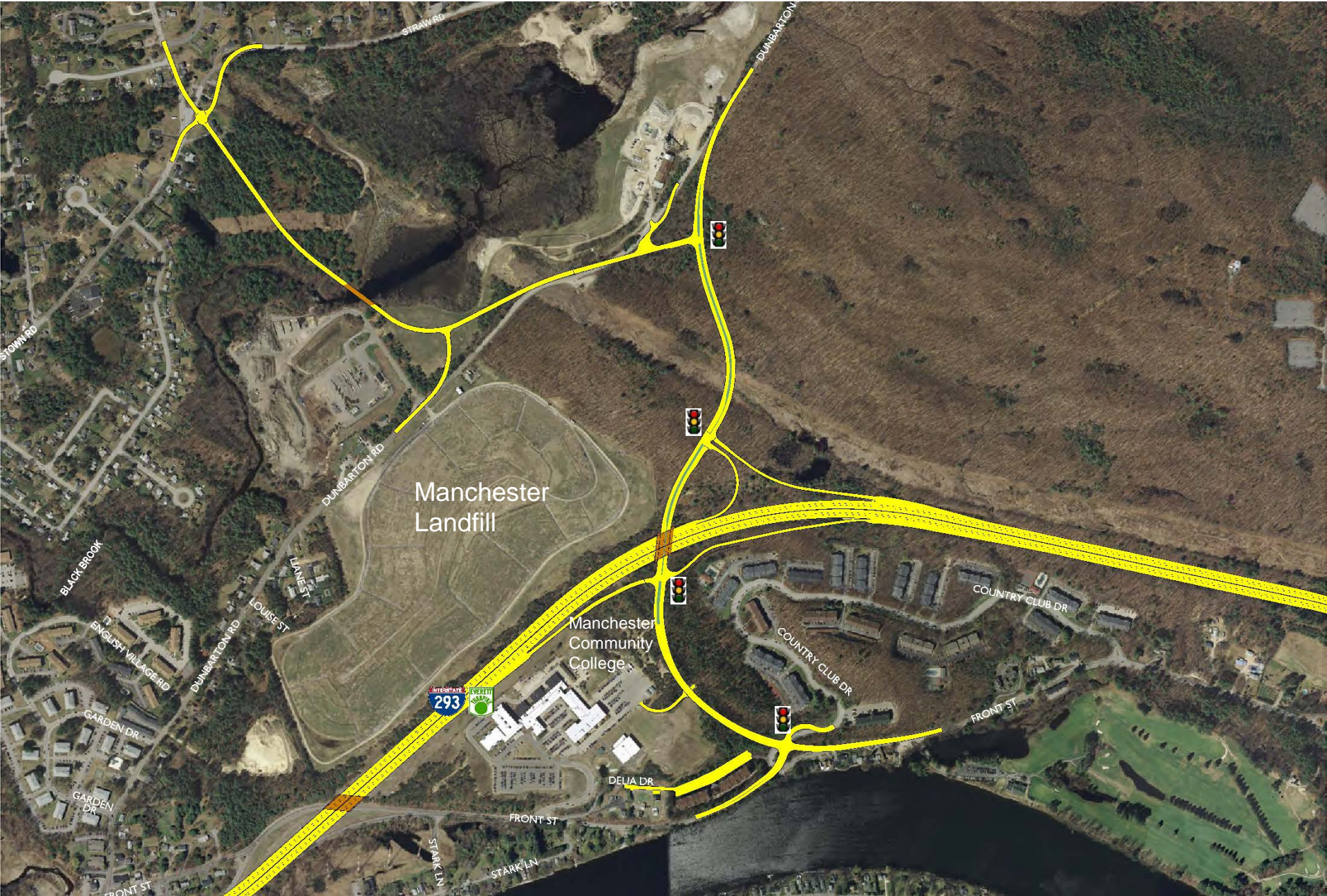
- Correcting geometric and safety deficiencies while reducing congestion at problem locations;
- Accommodating future traffic growth related to commuter trips and the transportation of commercial goods and services through the corridor; and
- Improving access to the highway consistent with the long-term vision of the communities of Manchester and Goffstown.

# MODIFIED FRONT STREET ALIGNMENT

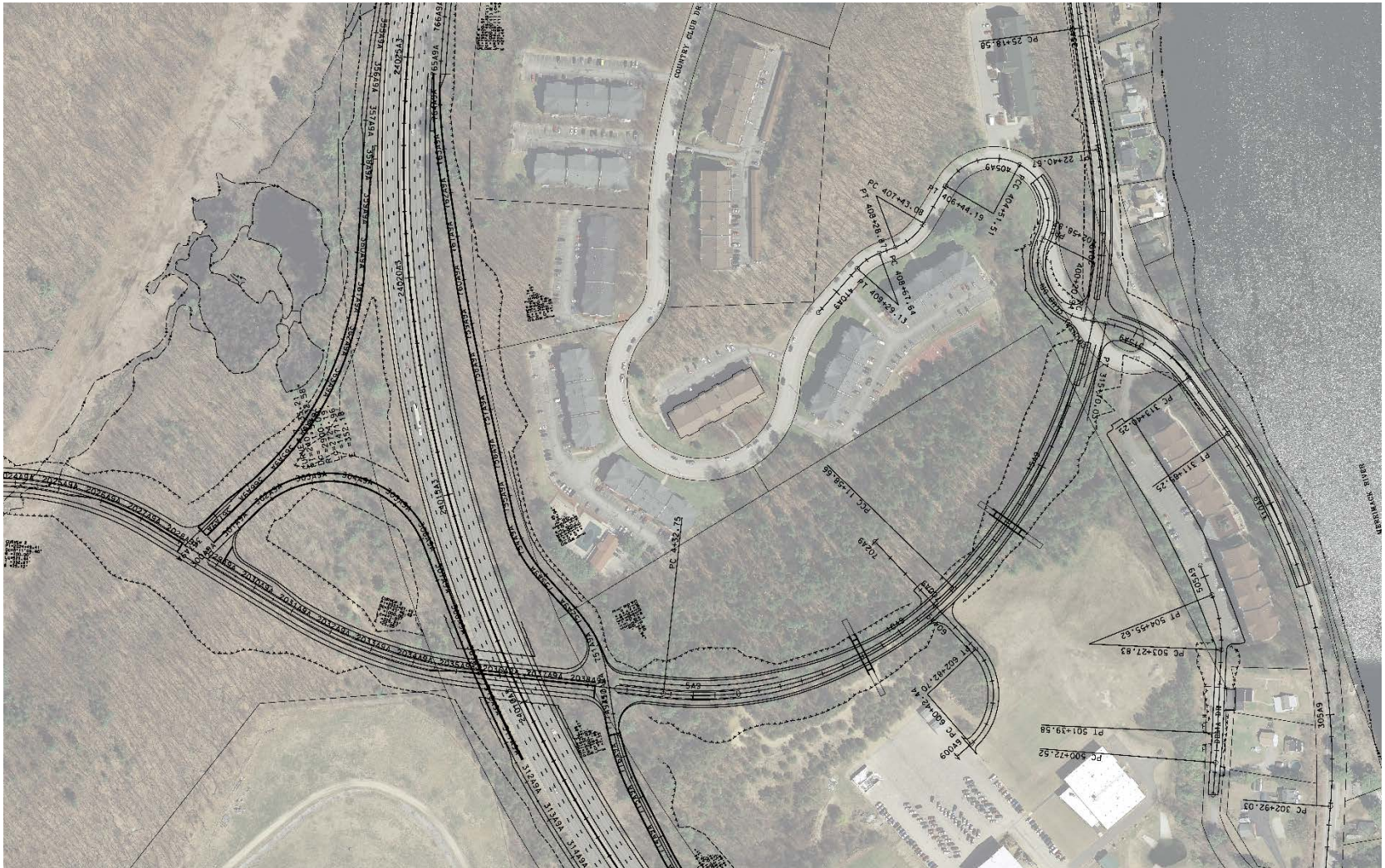
# Exit 7 – Potential New Location for Interchange



# Exit 7 – Potential New Location for Interchange

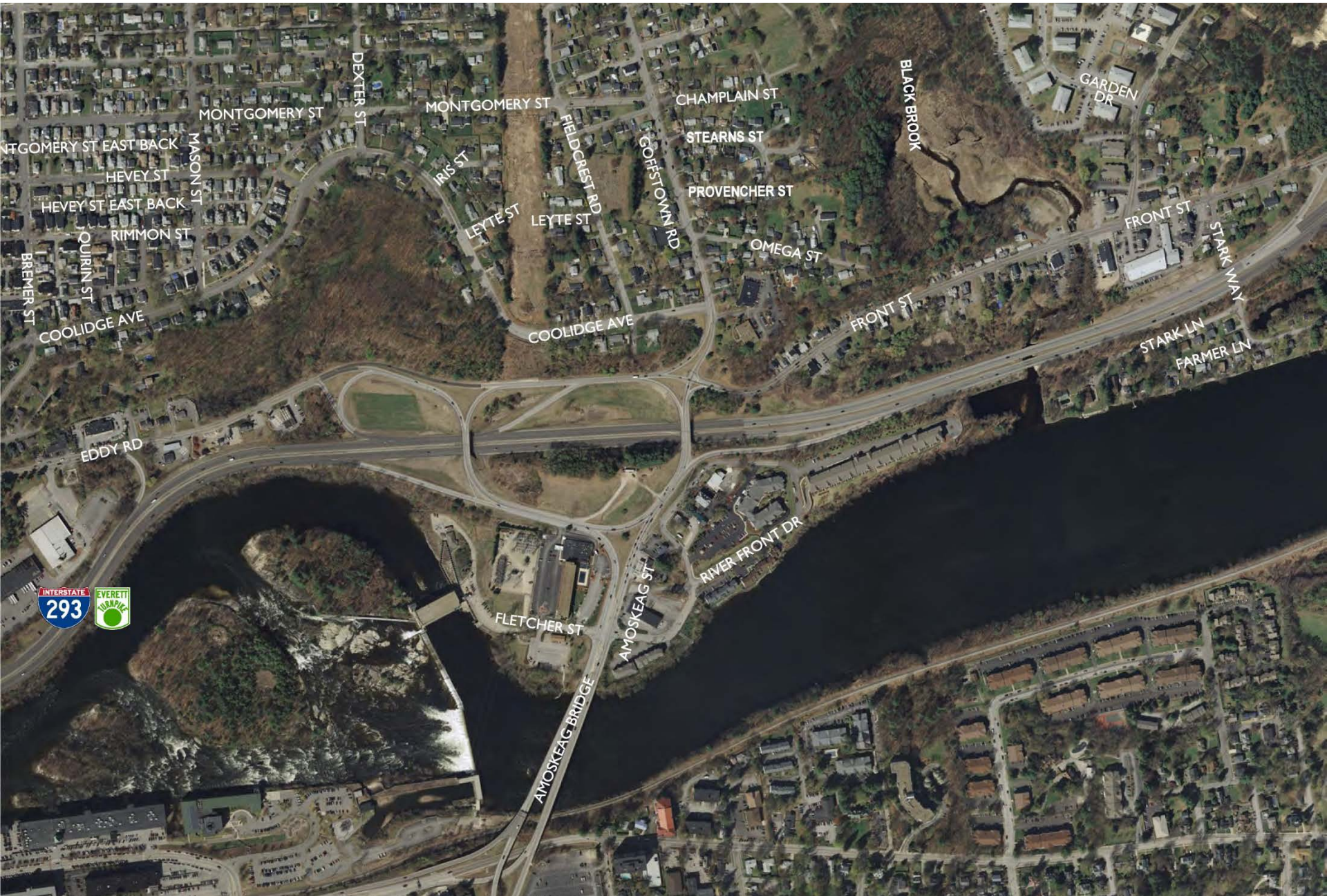


# MODIFIED FRONT STREET ALIGNMENT

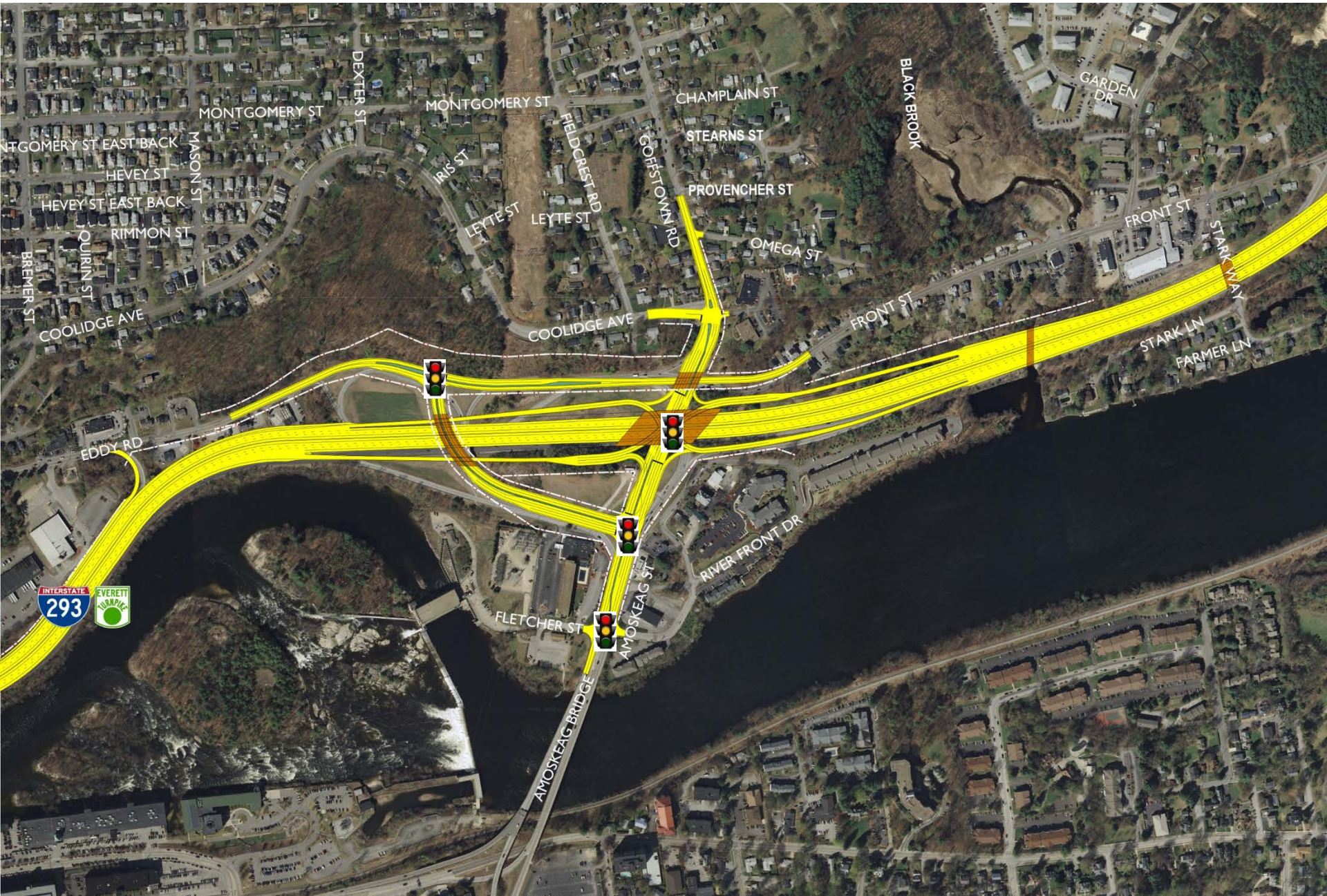


# PROPOSED ACTION

# Exit 6



# Exit 6 – Single Point Urban Interchange (SPUI)



# Exit 6 – Diamond Interchange



# Exit 6 – Diverging Diamond Interchange (DDI)



# Exit 6 – Offset Diamond Interchange



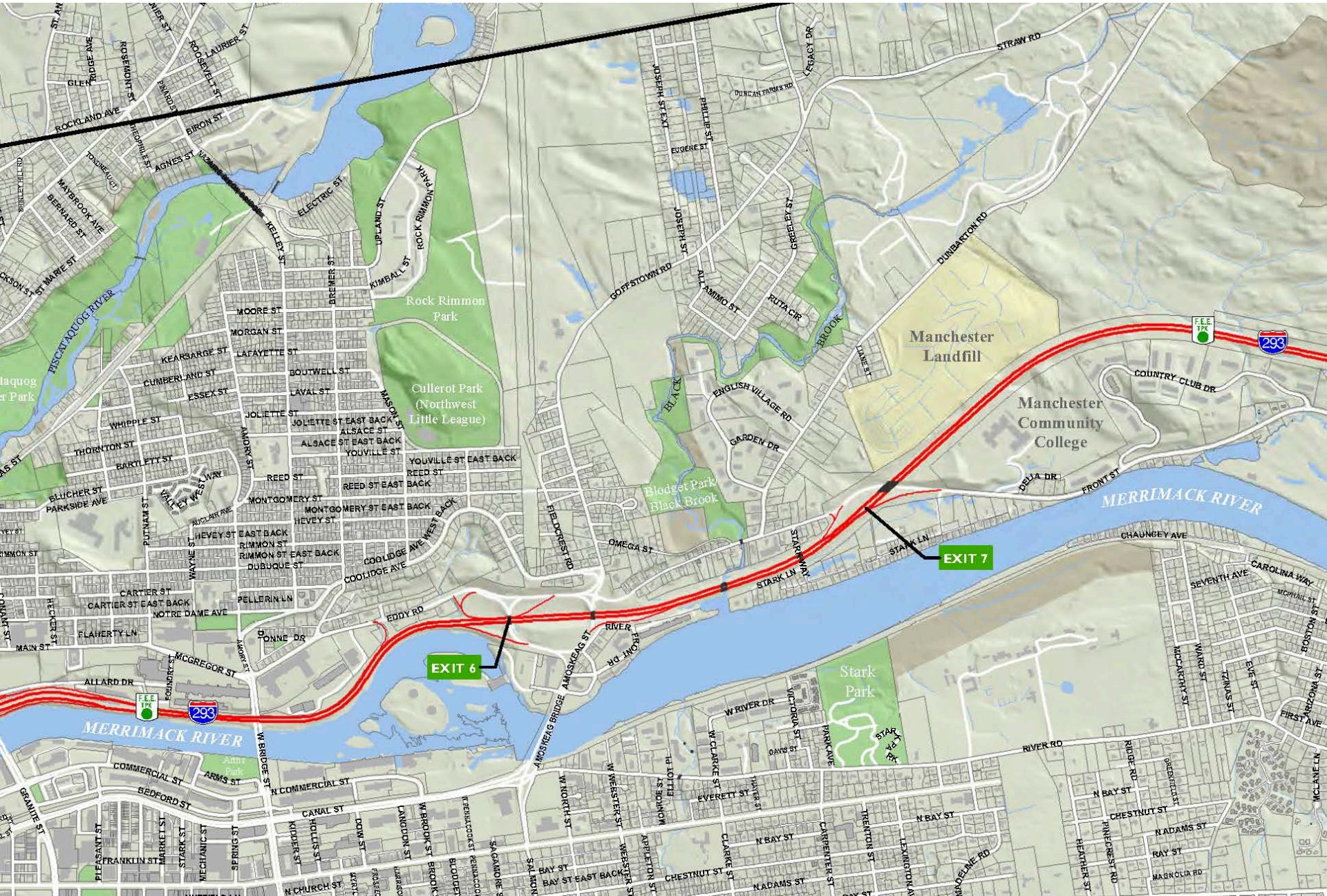
# Exit 7 – Current Location



# Exit 7 – Diamond Interchange (Current Location)



# Study Corridor



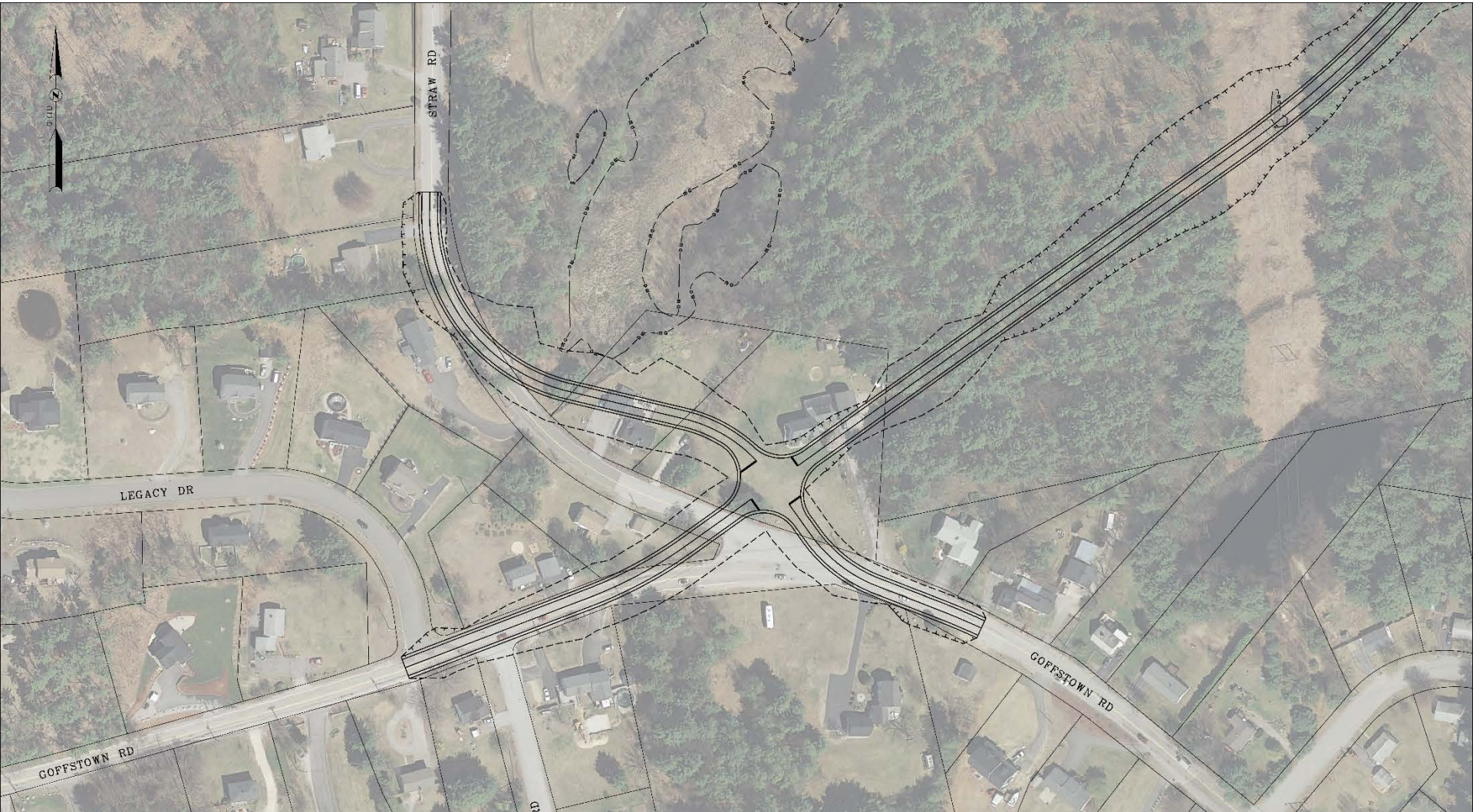


New Hampshire  
**DOT**  
Department of Transportation

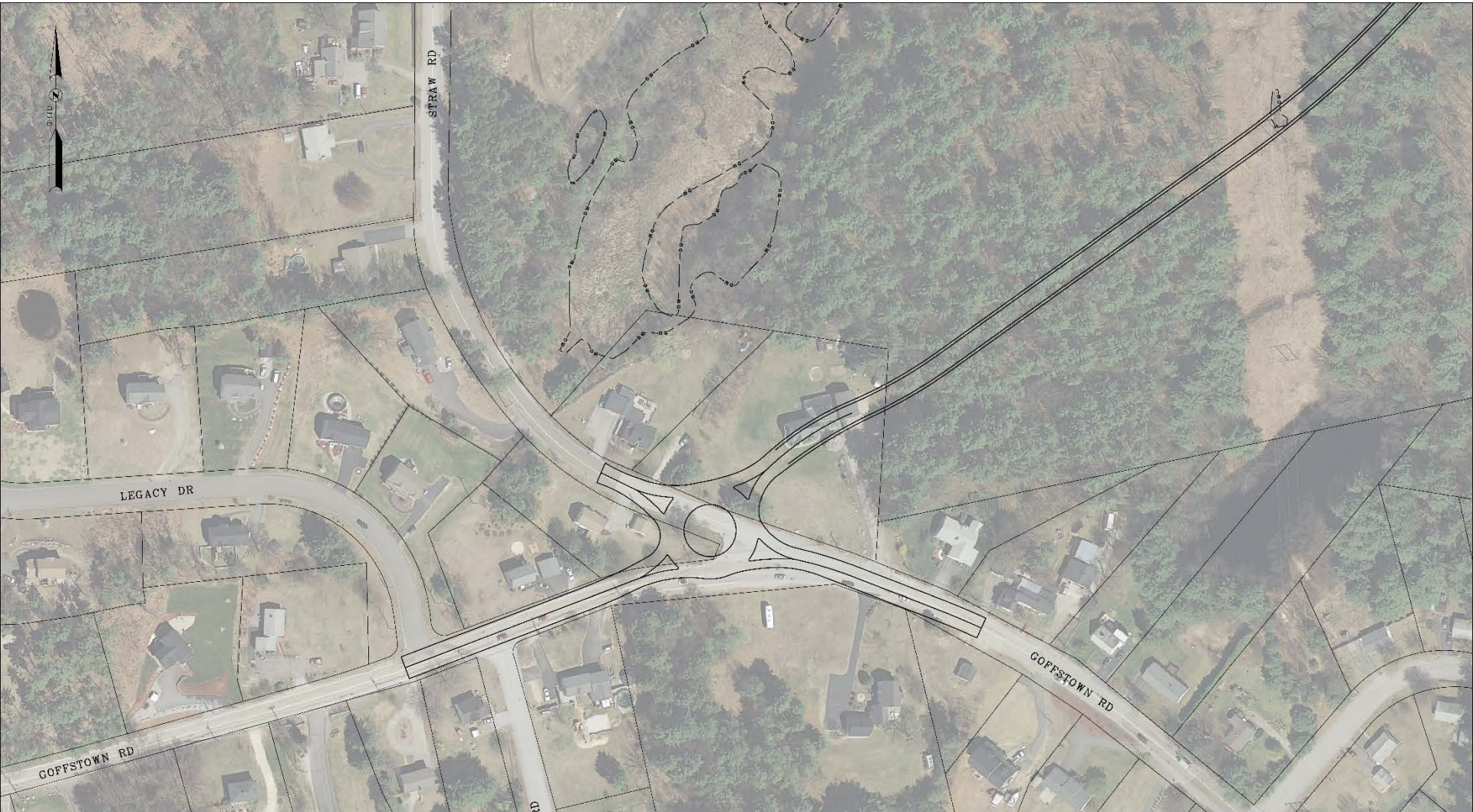
**vhb**



# GOFFSTOWN RD/STRAW RD/CONNECTOR RD 4-WAY INTERSECTION OPTION



# GOFFSTOWN RD/STRAW RD/CONNECTOR RD ROUNDBOUT OPTION



# GOFFSTOWN RD/STRAW RD/CONNECTOR RD OFF-SET INTERSECTIONS OPTION



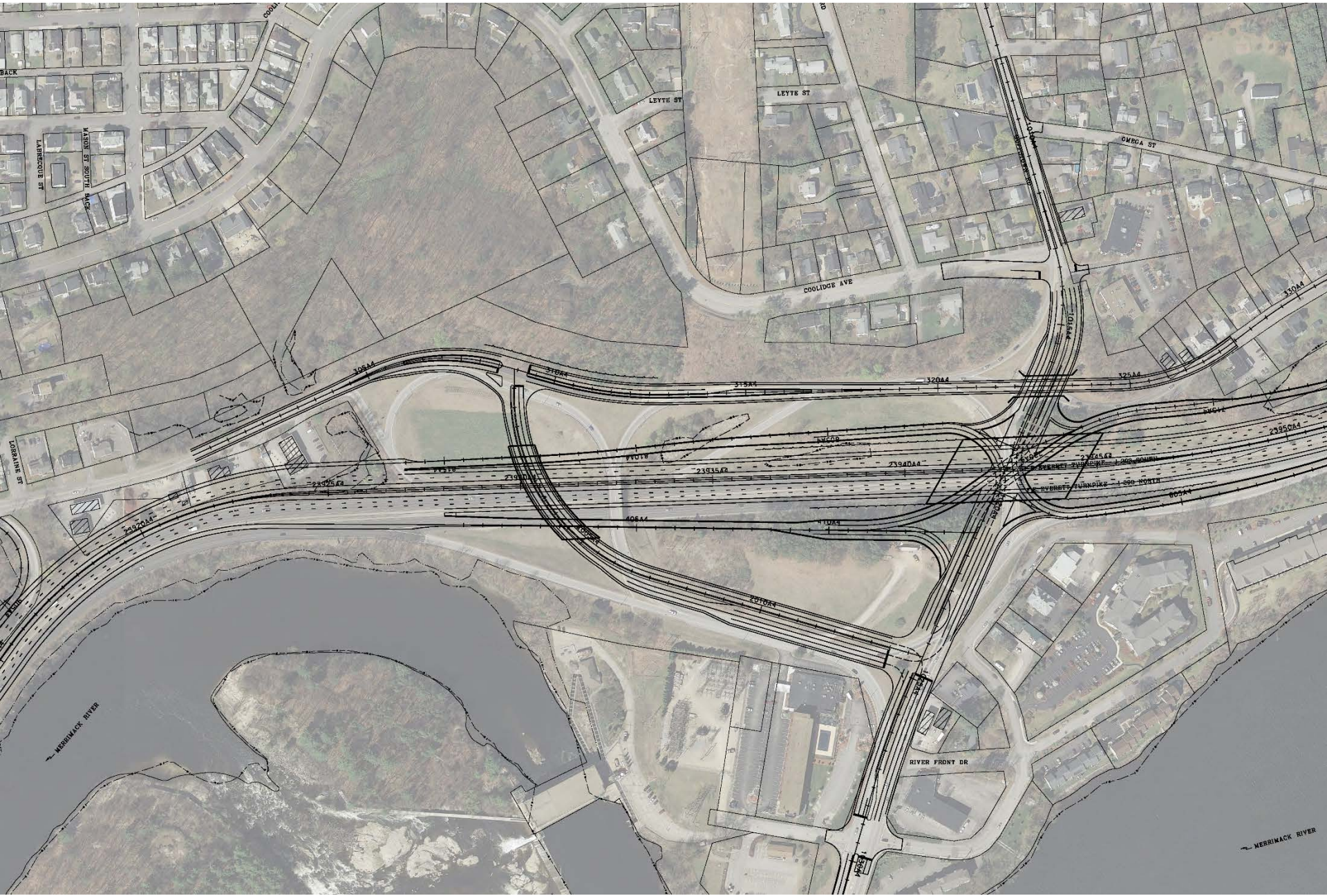
# EXIT 6 CONSTRUCTABILITY



New Hampshire  
DOT  
Department of Transportation



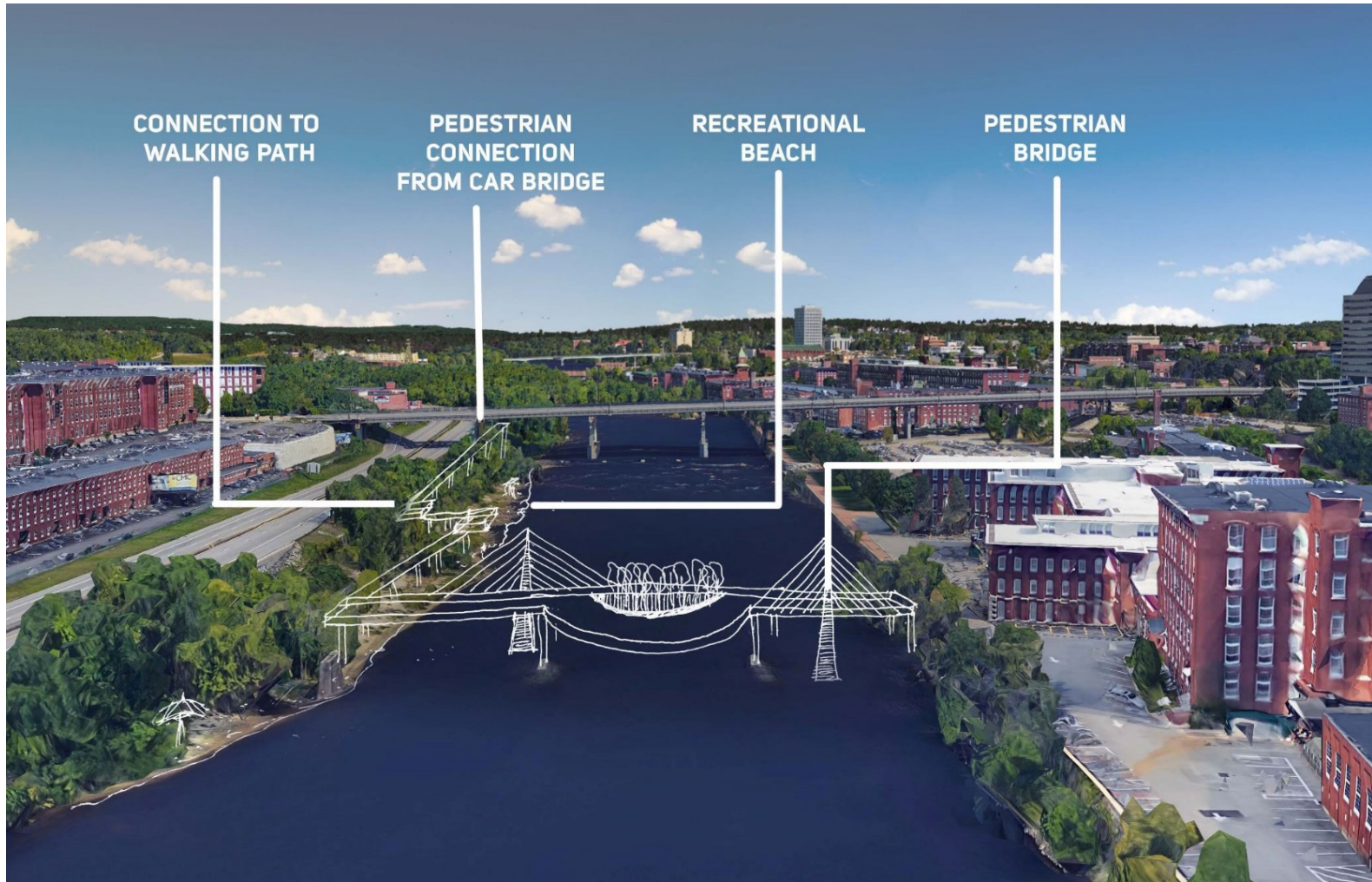
# Exit 6 – Single Point Urban Interchange (SPUI)



# Exit 6 – Diamond Interchange



# BICYCLE & PEDESTRIAN CONNECTIVITY



## Potential Riverfront Access



# MANCHESTER'S BIKE MASTER PLAN



# AMOSKEAG BRIDGE (EXIT 6)



# WEST BRIDGE ST



# GRANITE ST (EXIT 5)

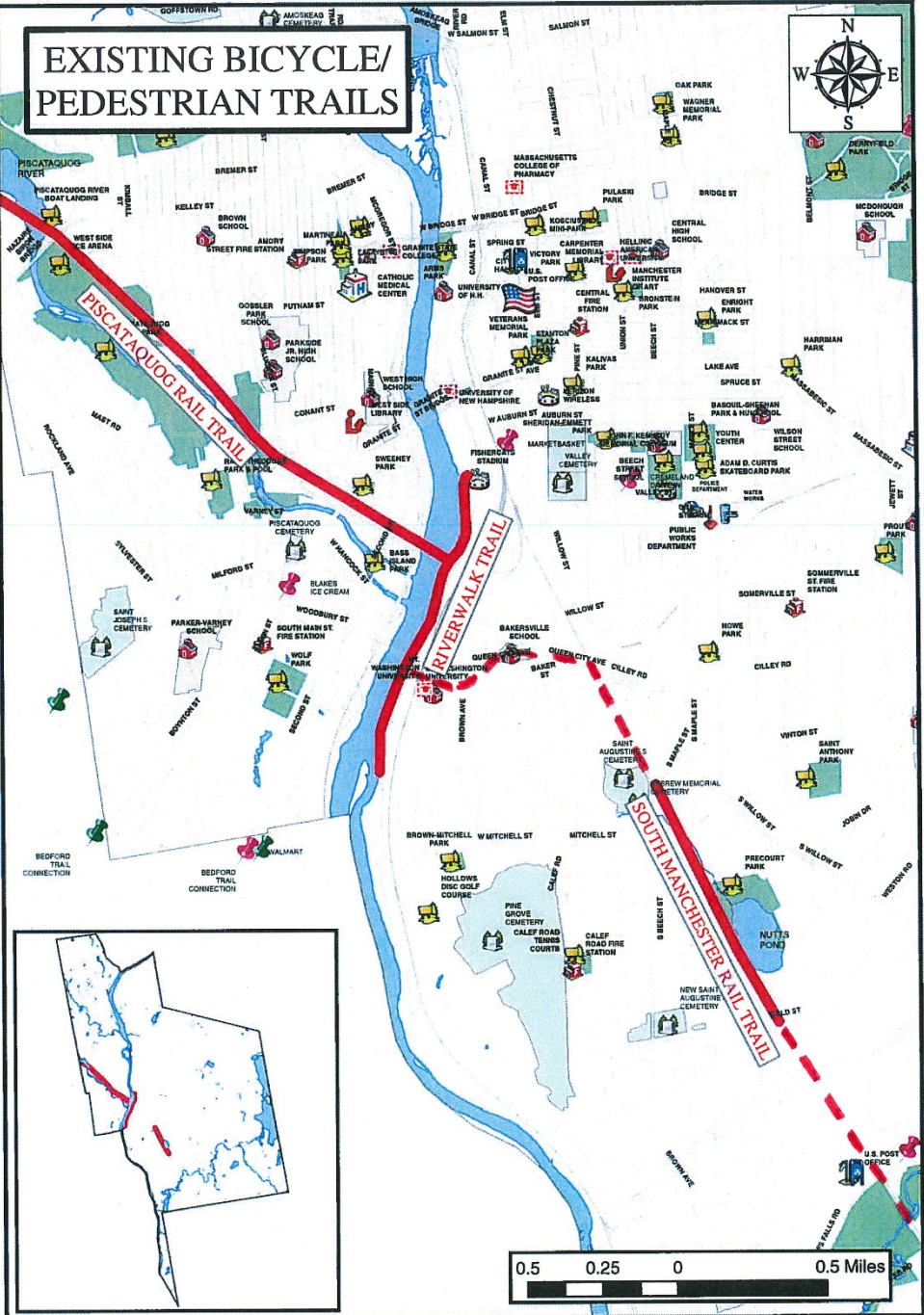


# PISCATAQUOG TRAIL (SOUTH OF EXIT 5)



1

Sections to be complete by 2018  
shown in broken red line



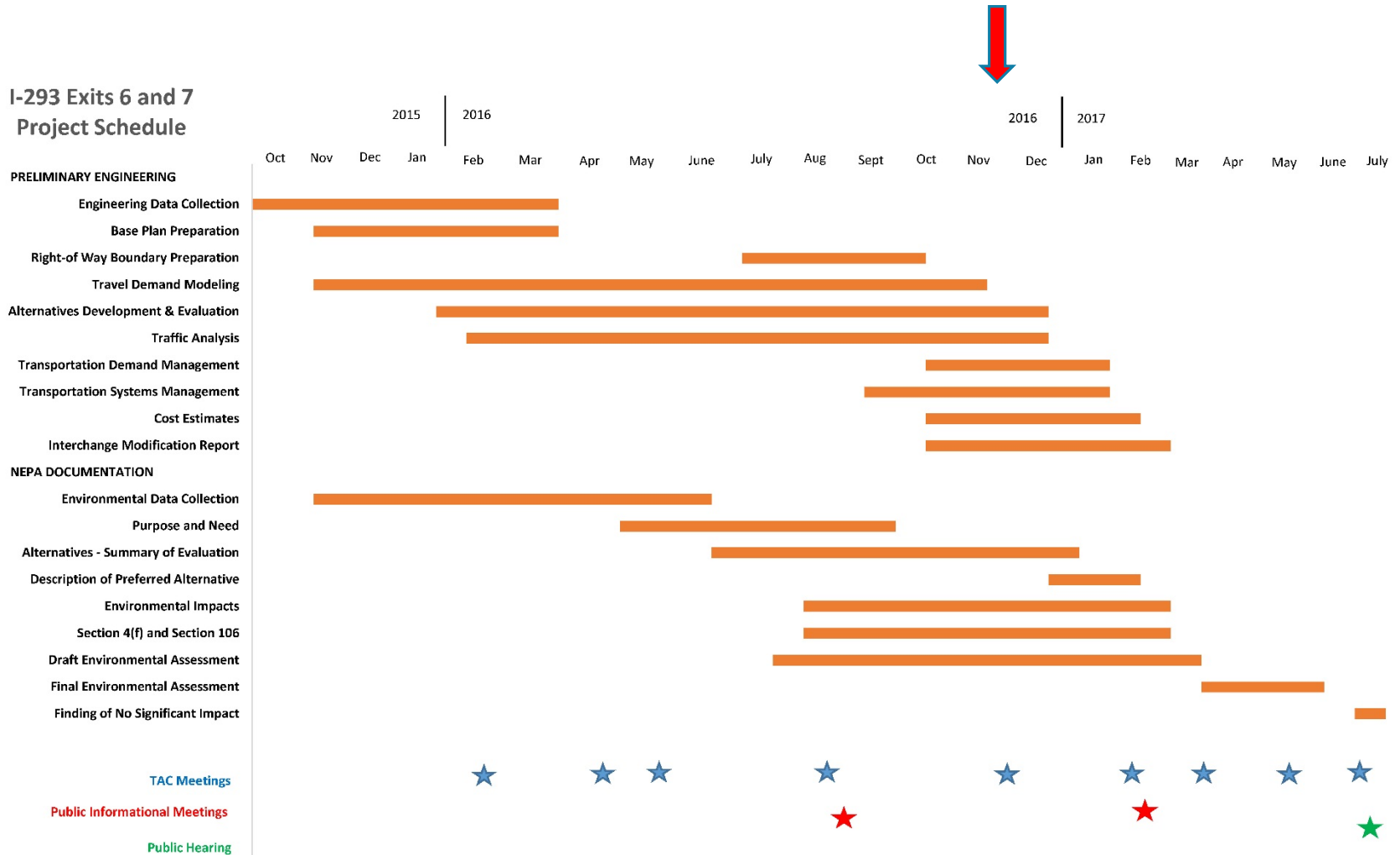
# Exit 6 – Offset Diamond Interchange



# UPDATED PROJECT SCHEDULE

# PROJECT SCHEDULE

## I-293 Exits 6 and 7 Project Schedule





# I-293 EXIT 6 & 7 (PART B)

Technical Advisory Committee (TAC)  
July 21, 2016

